



MARINER[®] GENERATORS

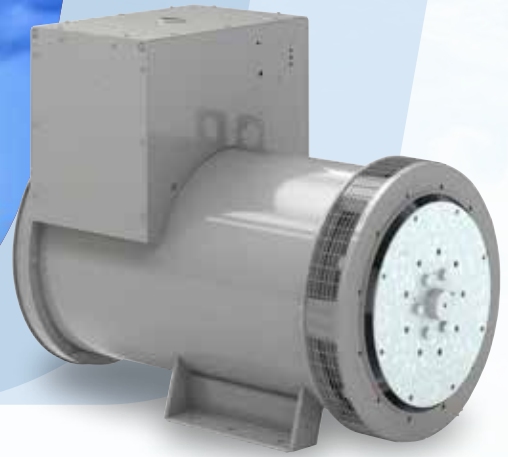
DEPENDABLE POWER FOR THE HARSHTEST MARINE
APPLICATIONS 10KW TO 800KW, 60HZ AND 50HZ

NOVEMBER 2022



MARINER[®]

MARINER[®]



Marathon[®] Generators deliver the long life and reliability that harsh marine applications demand.

Life at sea is harsh, especially for electrical equipment. The constant exposure to humidity and corrosive salt water can cause premature failure to a ship's generator.

Unlike typical industrial generators, Marine generators are engineered for corrosion resistance, high durability and rugged performance in even the harshest of conditions.

For more than 60 years, the Marathon brand has been synonymous with reliable power generation. Our extensive line of marine generators is built for rugged durability and engineered to meet your application needs.

Investing in a high-quality marine-specific generator will help ensure dependability, reduced maintenance expenses, and longer service life.

Applications

Commercial fishing vessels

Drilling Platforms

Cruisers and tankers

Supply Vessels

Car and train ferries

Yachts

Environmental Protection

- Winding treated with multiple dip and bake cycles of 100% solids varnish
- Reinforced main stator windings
- Taped and encapsulated exciter stator
- Anti-tracking coated exciter stator

Unirotor Construction



- Marathon's Unirotor single-piece laminations and wet-layer winding processes provide the most reliable rotor construction on the market

Electrical Protection

- Equipped with robust rectifier assemblies to eliminate damage from voltage surges, paralleling, large motor-starting or non-linear loads
- Hermetically sealed diodes are rated to exceed 300% of design requirement
- Selenium surge suppressors handle up to 40x more power than Metal Oxide Varistor (MOV) suppressor

Joval Industrial Miami FL USA

www.jovalindustrial.com

Contact us Today

Mariner® Heavy Duty

Features	Mariner
Harsh duty excite stator	✓
Surge suppressor	✓
Reinforced main stator	✓
Upsized diodes	✓
Multiple varnish dip & bake cycles	✓



Superior Voltage Regulation

Some applications demand finely controlled voltage regulation. For these applications, Marathon offers advanced regulator options with PMG excitation.



DVR®2400

- 0.25% voltage regulation
- Isolated PMG power supply assures reliable voltage output, independent of load
- Enables maximum motor starting capacity
- Full suite of protective features for extended service life



SE350E

- 1.00% voltage regulation
- Simple connections and setup
- 240V, single-phase sensing
- Shunt-powered, half-wave 240V power supply
- Remote voltage adjust rheostat available

Marine Agency Certified Generators

- Marine Agency certification for ABS®* / Lloyd's Register®* / DNV GL®* for generators up to 2100kW
- NEMA®* Class H non-hygroscopic insulation systems
- Include drip covers, space heaters & PMG support systems as required
- Units are built to agency requirements for (agency/witness) testing



Based on 100 KW, 45 °C ambient, 110 °C temperature rise

	American Bureau Of Shipping (ABS)	Lloyd's Register	DNV GL
Embedded Temperature Detectors	Required for all units 1kV and over	Required for propulsion systems only	Required for all units 1000kW and over
Space Heaters	Required	Not Specified	Required
Sustain Short Circuit Current in Percent (%) Rated F.L. Current	300% for 2 Sec.	300% for 2 Sec.	300% for 2 Sec.
Drip Cover or Minimum Enclosure Required	IP22	IP23	IP23
Fixed Termination of Load Leads	Not Specified	Required	Required
Shaft Material Test	Propulsion Only	Required	Required

*The following trademarks are not owned by, or under the control of Regal Rexnord Corporation: NEMA is a trademark or tradename of National Electrical Manufacturers Association; ABS is a trademark or tradename of ABS Group; Lloyd's Register is a trademark or tradename of Lloyd's Register Group Limited; DNV GL is a trademark or tradename of Det Norske Veritas group.

60 Hertz



Base Model	Net Wt. (lbs.)	No. of Leads	Standard Regulator	PMG Available	NEMA®* Class F			NEMA Class H		
					kW Ratings @ 95°C R/R over 50°C Amb.			kW Ratings @ 110°C R/R over 45°C Ambient		
					208Y - 240D	450Y	480Y	208Y - 240D	450Y	480Y
282PSL28043	295	12	SE350E	Yes	17.5	17.5	17.5	20	20	20
283PSL28045	366	12	SE350E	Yes	25	25	26	28	29	30
284PSL28047	436	12	SE350E	Yes	33	33	33	36	36	36
285PSL28048	480	12	SE350E	Yes	37	38	40	36	37	38
361PSL3120	518	12	SE350E	Yes	37	40	41	40	42	45
361PSL3121	569	12	SE350E	Yes	46	48	50	50	53	55
361PSL3122	620	12	SE350E	Yes	55	58	60	60	63	65
362PSL3124	706	12	SE350E	Yes	67	70	77	72	76	84
362PSL3126	796	12	SE350E	Yes	82	83	83	90	92	96
363PSL3127	943	12	SE350E	Yes	105	110	115	110	115	125
431PSL6252	1220	12	SE350E	Yes	133	135	135	140	143	142
431PSL6254	1310	12	SE350E	Yes	156	160	160	165	167	170
431PSL6256	1415	12	SE350E	Yes	183	190	186	191	200	200
431PSL6258	1455	12	SE350E	Yes	195	198	200	203	210	211
432PSL6260	1685	12	SE350E	Yes	245	245	245	260	261	260
432PSL6262	1760	12	SE350E	Yes	245	255	260	260	266	275
433PSL6266	2235	12	SE350E	Yes	325	325	321	343	348	342
433PSL6270	2245	12	SE350E	Yes	345	355	352	362	375	375
572RSL6325	2730	12	DVR2400	Std	400	430	430	435	462	450
572RSL6327	2840	12	DVR2400	Std	415	440	475	445	470	500
572RSL6329	3050	12	DVR2400	Std	470	505	505	510	547	535
572RSL6331	3110	12	DVR2400	Std	470	500	515	525	557	575
573RSL6333	3400	12	DVR2400	Std	610	645	645	650	690	680
573RSL6335	3620	12	DVR2400	Std	625	652	670	680	725	710
574RSL6337	4080	12	DVR2400	Std	655	690	700	725	770	800

50 Hertz



Base Model	Net Wt. (kgs.)	No. of Leads	Standard Regulator	PMG Available	NEMA Class F			NEMA Class H		
					kVA Ratings @ 95°C R/R over 50°C Ambient			kVA Ratings @ 110°C R/R over 45°C Ambient		
					220Y	380Y	400Y	220Y	380Y	400Y
282PSL28043	134	12	SE350E	Yes	12	16.9	15.6	13.5	19.8	18.5
283PSL28045	166	12	SE350E	Yes	20	23	23	23	28	28
284PSL28047	198	12	SE350E	Yes	25	31	30	29	37	35
285PSL28048	218	12	SE350E	Yes	30	32	37	43	36	41
361PSL3120	234	12	SE350E	Yes	38	40	41	40	44	45
361PSL3121	258	12	SE350E	Yes	43	50	50	45	53	52
361PSL3122	281	12	SE350E	Yes	45	60	56	51	65	62
362PSL3124	320	12	SE350E	Yes	65	75	73	75	80	81
362PSL3126	361	12	SE350E	Yes	73	82	81	81	94	94
363PSL3127	427	12	SE350E	Yes	90	100	100	101	113	113
431PSL6252	553	12	SE350E	Yes	121	140	135	130	143	141
431PSL6254	594	12	SE350E	Yes	143	160	160	151	166	165
431PSL6256	641	12	SE350E	Yes	150	186	183	161	200	193
431PSL6258	659	12	SE350E	Yes	183	200	200	195	210	210
432PSL6260	764	12	SE350E	Yes	191	235	240	210	256	251
432PSL6262	798	12	SE350E	Yes	245	256	256	260	270	271
433PSL6266	1013	12	SE350E	Yes	241	325	310	265	245	331
433PSL6270	1018	12	SE350E	Yes	285	355	350	310	375	368
572RSL6325	1239	12	DVR2400	Std	306	438	425	331	469	450
572RSL6327	1289	12	DVR2400	Std	356	450	463	363	475	494
572RSL6329	1384	12	DVR2400	Std	331	506	506	381	550	531
572RSL6331	1411	12	DVR2400	Std	431	513	525	469	563	563
573RSL6333	1543	12	DVR2400	Std	519	669	656	556	700	688
573RSL6335	1642	12	DVR2400	Std	469	663	669	513	738	706
574RSL6337	1851	12	DVR2400	Std	519	700	725	569	769	794

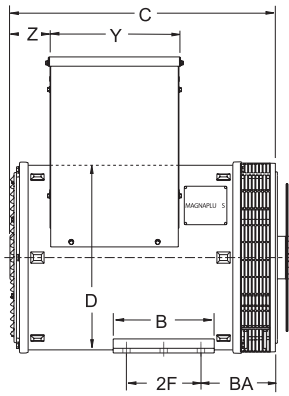
*NEMA is a trademark or tradename of National Electrical Manufacturers Association and is not owned by, or under the control of Regal Rexnord Corporation.

DIMENSIONS IN INCHES AND (MILLIMETERS)

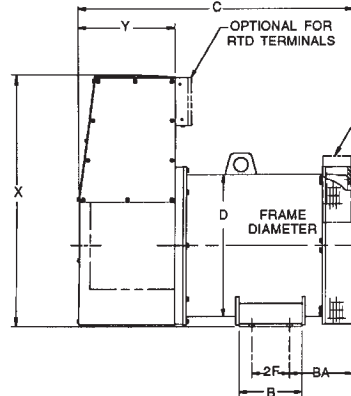
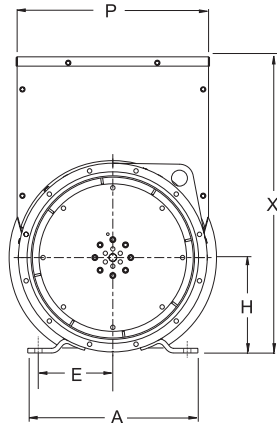


All dimensions are approximate. Contact Regal Rexnord for full dimensional data

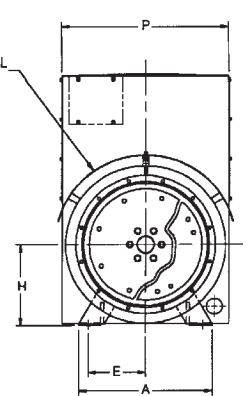
(please see back cover for the contact details).



280-430 frame



570 frame



Frame size	A	B	BA	C	C with PMG	D	E	2F	H	P	X	Y	Z
282	14.00 (356)	7.00 (178)	6.56 (167)	18.50 (470)	23.10 (587)	13.64 (346)	6.25 (159)	5.00 (127)	8.00 (203)	13.55 (344)	18.56 (471)	8.93 (227)	3.42 (87)
283	14.00 (356)	7.00 (178)	6.56 (167)	20.50 (521)	25.10 (638)	13.64 (346)	6.25 (159)	5.00 (127)	8.00 (203)	13.55 (344)	18.56 (471)	8.93 (227)	3.42 (87)
284	14.00 (356)	7.00 (178)	6.56 (167)	22.75 (578)	27.40 (696)	13.64 (346)	6.25 (159)	5.00 (127)	8.00 (203)	13.55 (344)	18.56 (471)	8.93 (227)	3.42 (87)
285	14.00 (356)	7.00 (178)	11.56 (294)	25.00 (635)	29.60 (752)	13.64 (346)	6.25 (159)	5.00 (127)	8.00 (203)	13.55 (344)	18.56 (471)	8.93 (227)	3.42 (87)
361	16.00 (406)	9.50 (241)	7.00 (178)	24.96 (634)	27.56 (700)	17.35 (441)	7.00 (178)	7.00 (178)	9.00 (229)	18.19 (462)	27.85 (707)	12.44 (316)	3.52 (89)
362	16.00 (406)	9.50 (241)	7.00 (178)	28.59 (726)	31.18 (792)	17.35 (441)	7.00 (178)	7.00 (178)	9.00 (229)	18.19 (462)	27.85 (707)	12.44 (316)	3.52 (89)
363	16.00 (406)	9.50 (241)	10.50 (267)	31.72 (806)	34.29 (871)	17.35 (441)	7.00 (178)	7.00 (178)	9.00 (229)	18.19 (462)	27.85 (707)	12.44 (316)	3.52 (89)
431	21.46 (545)	15.00 (381)	10.00 (254)	33.89 (861)	38.27 (972)	22.64 (575)	9.00 (229)	11.00 (279)	13.00 (330)	24.97 (634)	36.10 (917)	16.00 (406)	2.66 (68)
432	21.46 (545)	15.00 (381)	10.00 (254)	37.39 (950)	41.77 (1061)	22.64 (575)	9.00 (229)	11.00 (279)	13.00 (330)	24.97 (634)	36.10 (917)	16.00 (406)	2.66 (68)
433	21.46 (545)	15.00 (381)	10.00 (254)	42.39 (1077)	46.77 (1188)	22.64 (575)	9.00 (229)	11.00 (279)	13.00 (330)	24.97 (634)	36.10 (917)	16.00 (406)	2.66 (68)
572RSL	22.50 (572)	15.00 (381)	11.50 (292)	n/a	51.52 (1308)	27.64 (702)	10.00 (254)	11.00 (279)	15.50 (394)	30.77 (782)	42.64 (1083)	17.21 (437)	n/a
573RSL	22.50 (572)	24.00 (610)	11.50 (292)		58.02 (1474)	27.64 (702)	10.00 (254)	20.00 (508)	15.50 (394)	30.77 (782)	42.64 (1083)	17.21 (437)	
574RSL	22.50 (572)	24.00 (610)	11.50 (292)		65.02 (1651)	27.64 (702)	10.00 (254)	20.00 (508)	15.50 (394)	30.77 (782)	42.64 (1083)	17.21 (437)	

Must have minimum clearance of 6 inches for air flow into the generator. Additional clearance may be required for servicing.
280 - 430 frame sizes equipped with linkboard as standard.

marathon[®]

Generators

Reliable power ... for the long run

Industrial Solutions Regal Rexnord

100 East Randolph Street
Wausau, WI 54402-8003
Phone: 715-675-3359
Fax: 715-675-8026
www.regalrexnord.com

The proper selection and application of products and components, including assuring that the product is safe for its intended use, are the responsibility of the customer. To view our Application Considerations, please visit <https://www.regalrexnord.com/Application-Considerations>

To view our Standard Terms and Conditions of Sale, please visit <https://www.regalrexnord.com/brands/marathon-generators/Terms-and-Conditions-of-Sale> (which may redirect to other website locations based on product family).

The following trademarks are not owned by, or under the control of Regal Rexnord Corporation: NEMA is a trademark or tradename of National Electrical Manufacturers Association; ABS is a trademark or tradename of ABS Group; Lloyd's Register is a trademark or tradename of Lloyd's Register Group Limited; DNV GL is a trademark or tradename of Det Norske Veritas group.

"Regal Rexnord" is not indicative of legal entity.

Regal Rexnord, DVR, Marathon and MARINER are trademarks of Regal Rexnord Corporation or one of its affiliated companies. ©2020, 2022 Regal Rexnord Corporation. All Rights Reserved.

MCB22034E • Form# SB0239E

[Joval Industrial Miami FL USA](http://www.jovalindustrial.com)

www.jovalindustrial.com


Contact us Today